

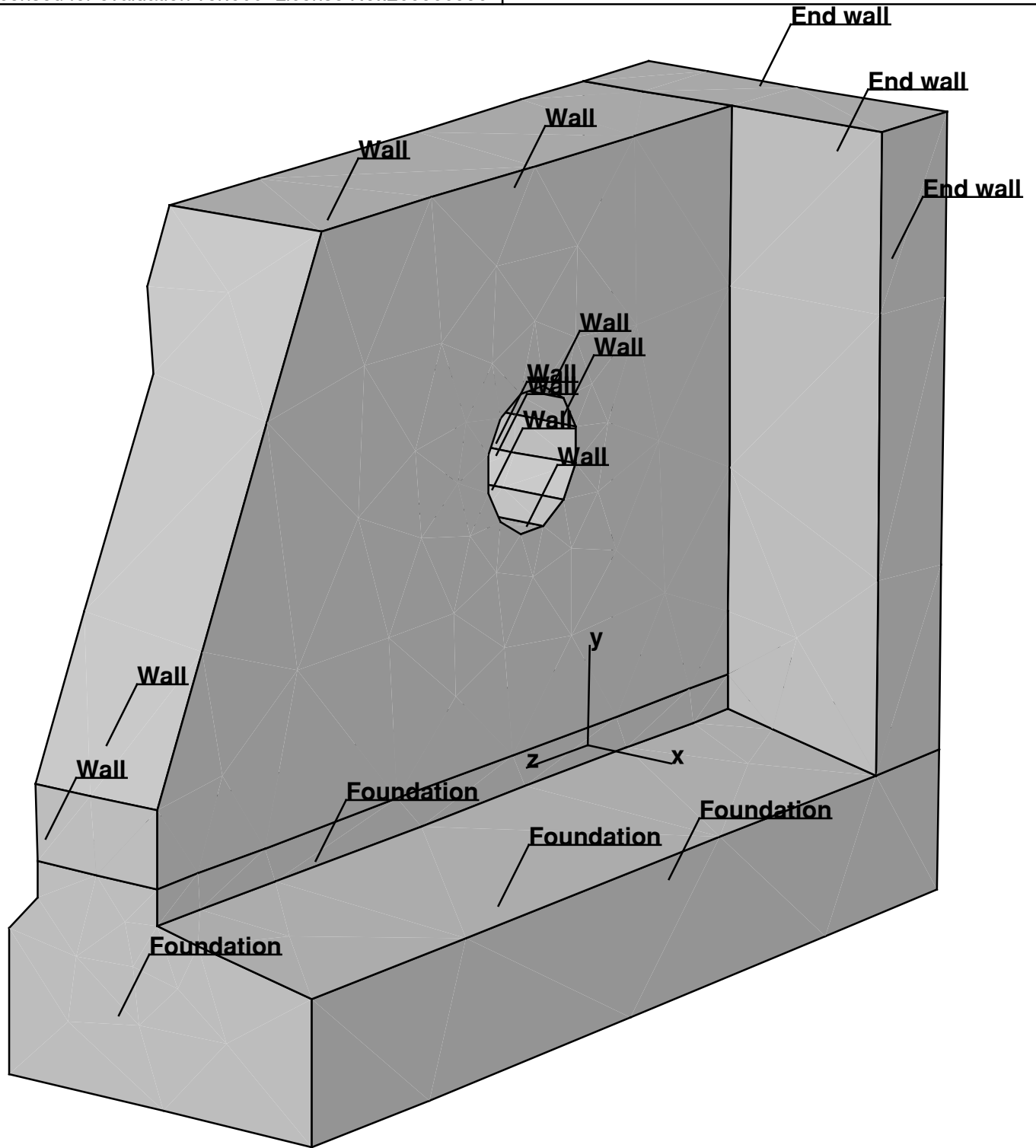
b4cast ver. 500	User defined Text1		
ConTech Analysis ApS www.b4cast.com Licensed for evaluation ver.500 License No.:265380996	User defined Text2		
<p>In this window it is possible to make a describing text. The text can be manually typed in or pasted from the clipboard. It is also possible to refer to an external document by means of the Link File-button. Notice that the document is not actually loaded into the job, only the address of the document is saved. That means that the document-file has to follow the job-file. As a consequence it is a good idea to place the job-file and the document-file in the same directory/folder.</p>			
<i>Job: web2-cooled-str</i>	<i>View: mesh</i>	<i>Calc.: 09-05-2012 13:41</i>	<i>Printed: 10-11-2015 20:34</i>

b4cast ver. 500

User defined Text1

ConTech Analysis ApS
www.b4cast.com
Licensed for evaluation ver.500 License No.:265380996

User defined Text2



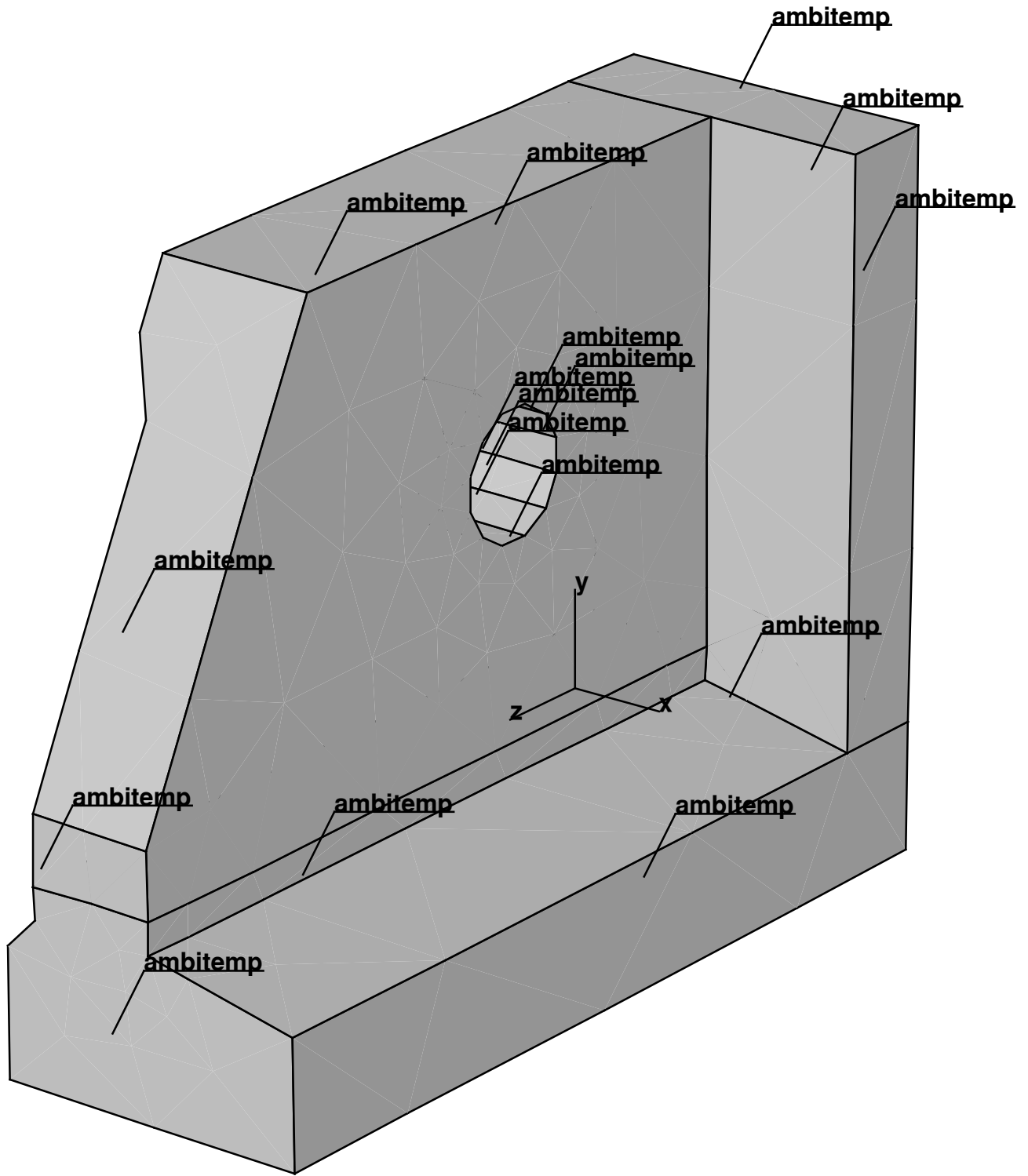
Volumes at ,00 hours

b4cast ver. 500

User defined Text1

ConTech Analysis ApS
www.b4cast.com
Licensed for evaluation ver.500 License No.:265380996

User defined Text2



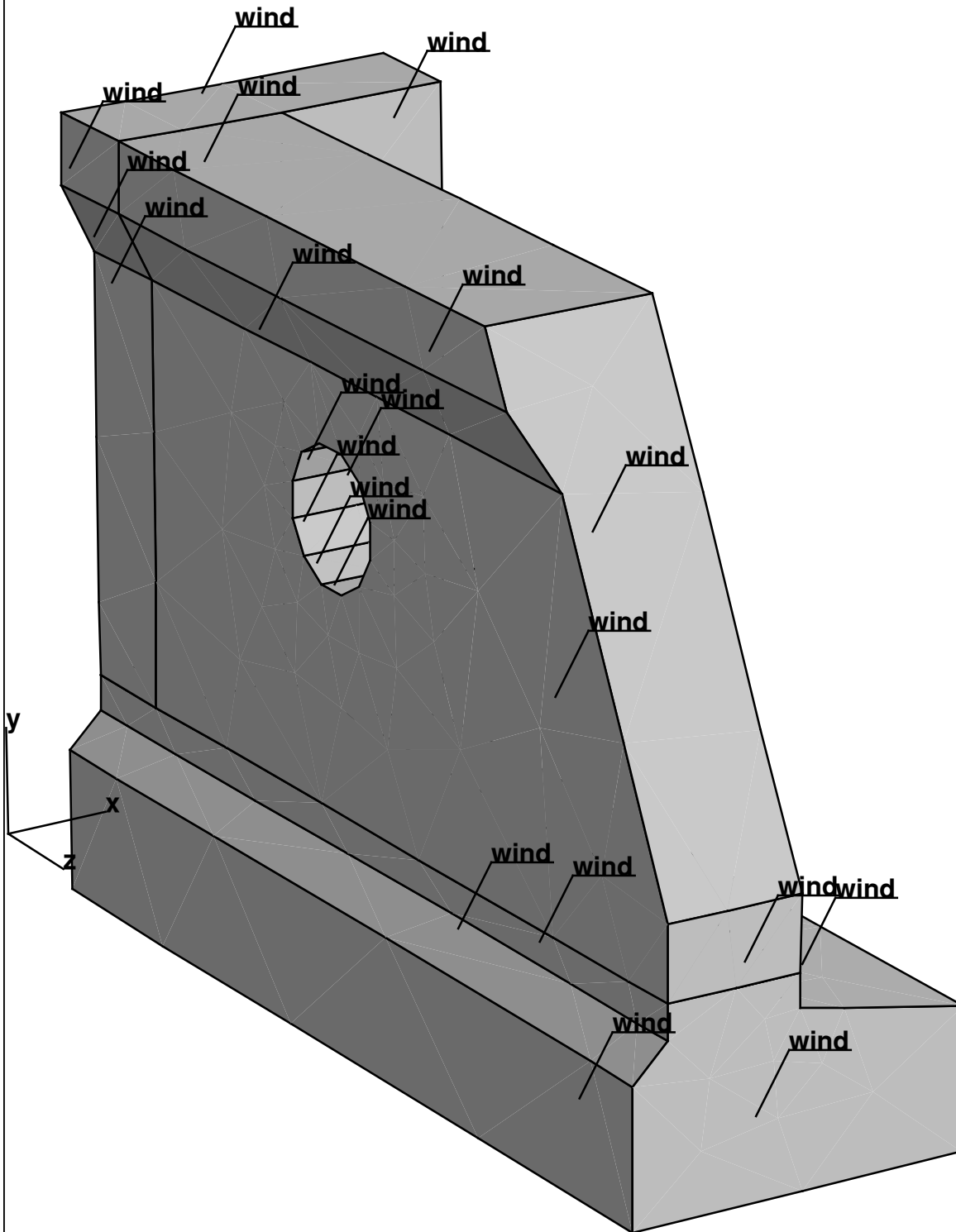
Boundaries, Convection Temperatures at ,00 hours

b4cast ver. 500

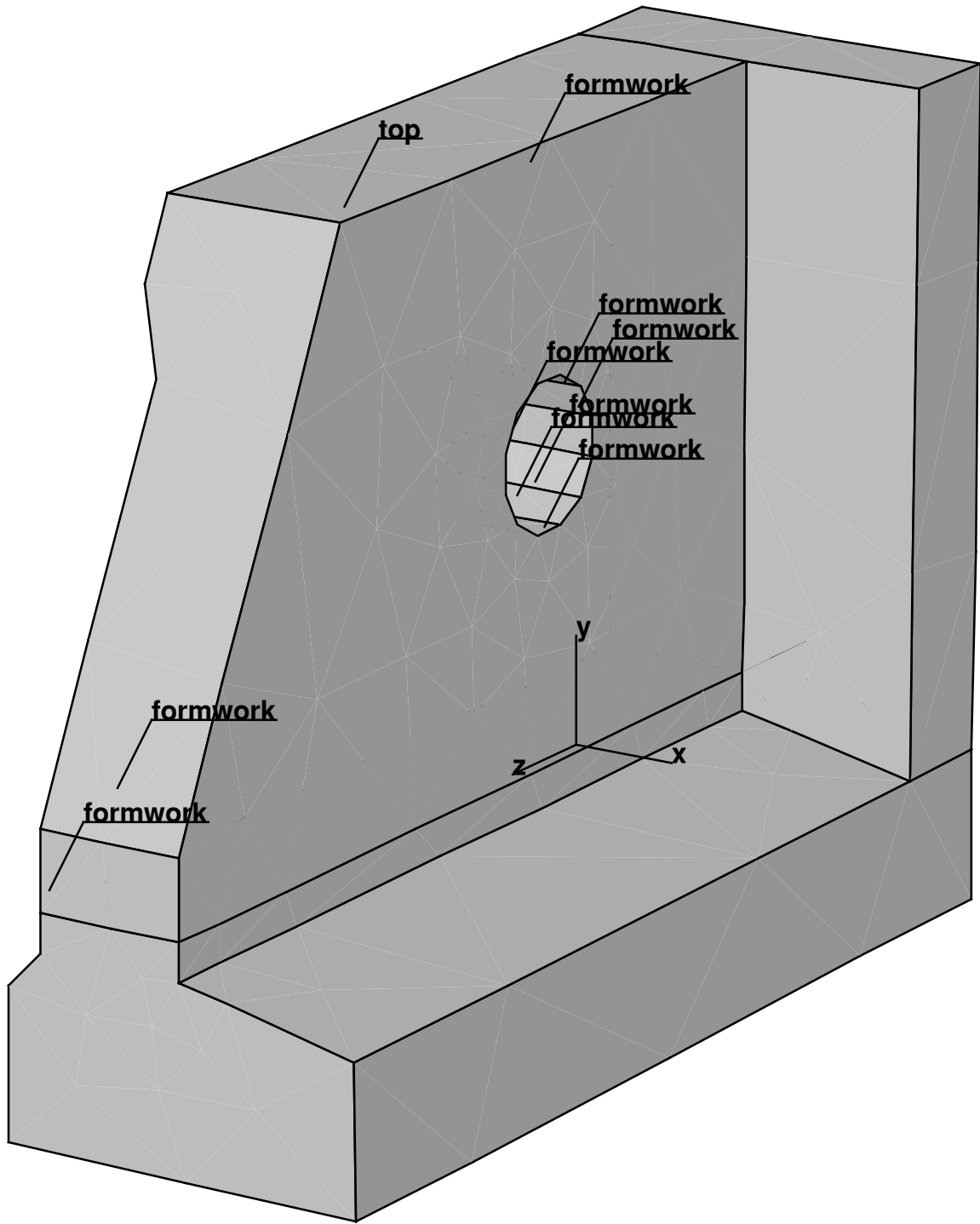
User defined Text1

ConTech Analysis ApS
www.b4cast.com
Licensed for evaluation ver.500 License No.:265380996

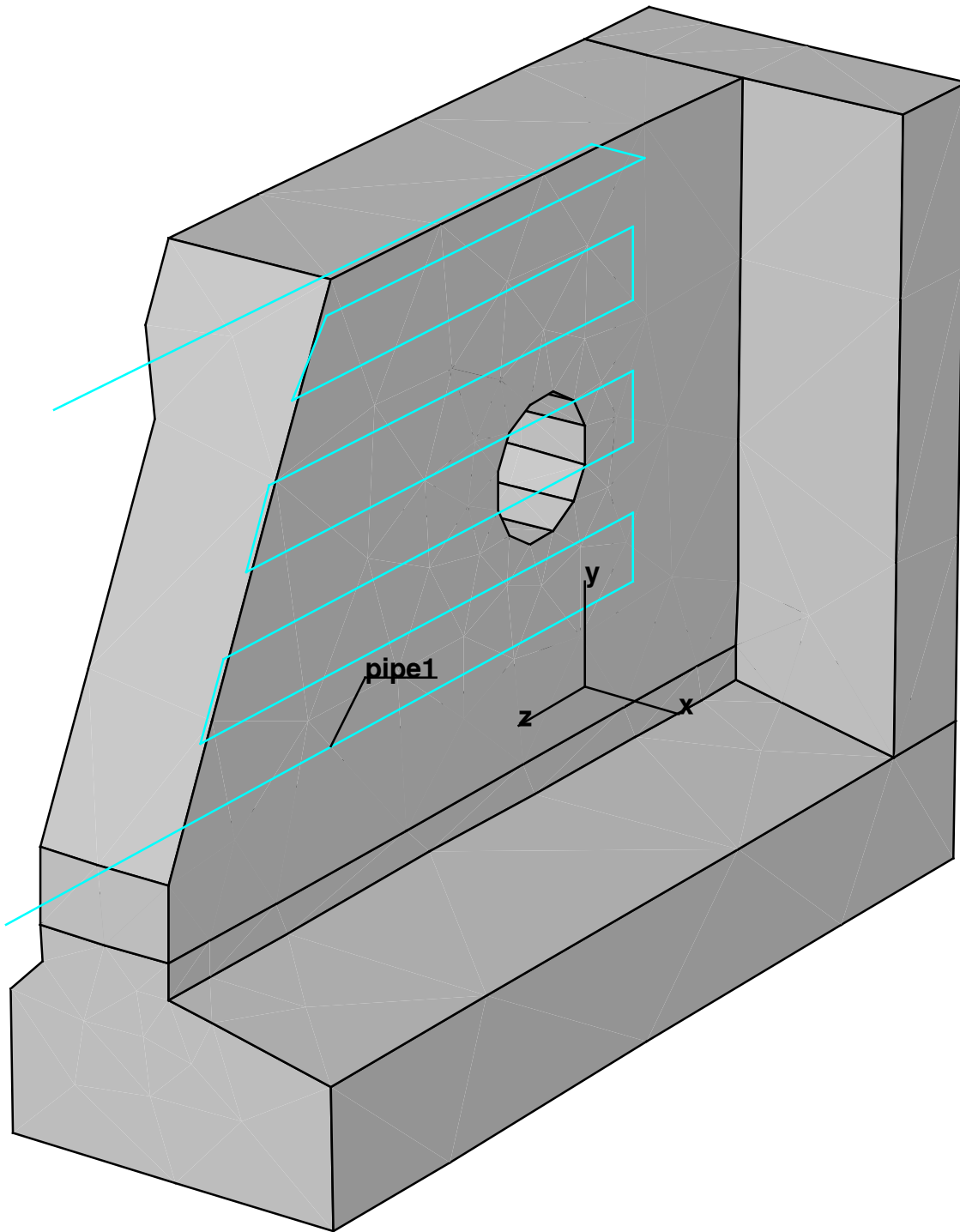
User defined Text2



Boundaries, Windspeed at ,00 hours



Shields at ,00 hours



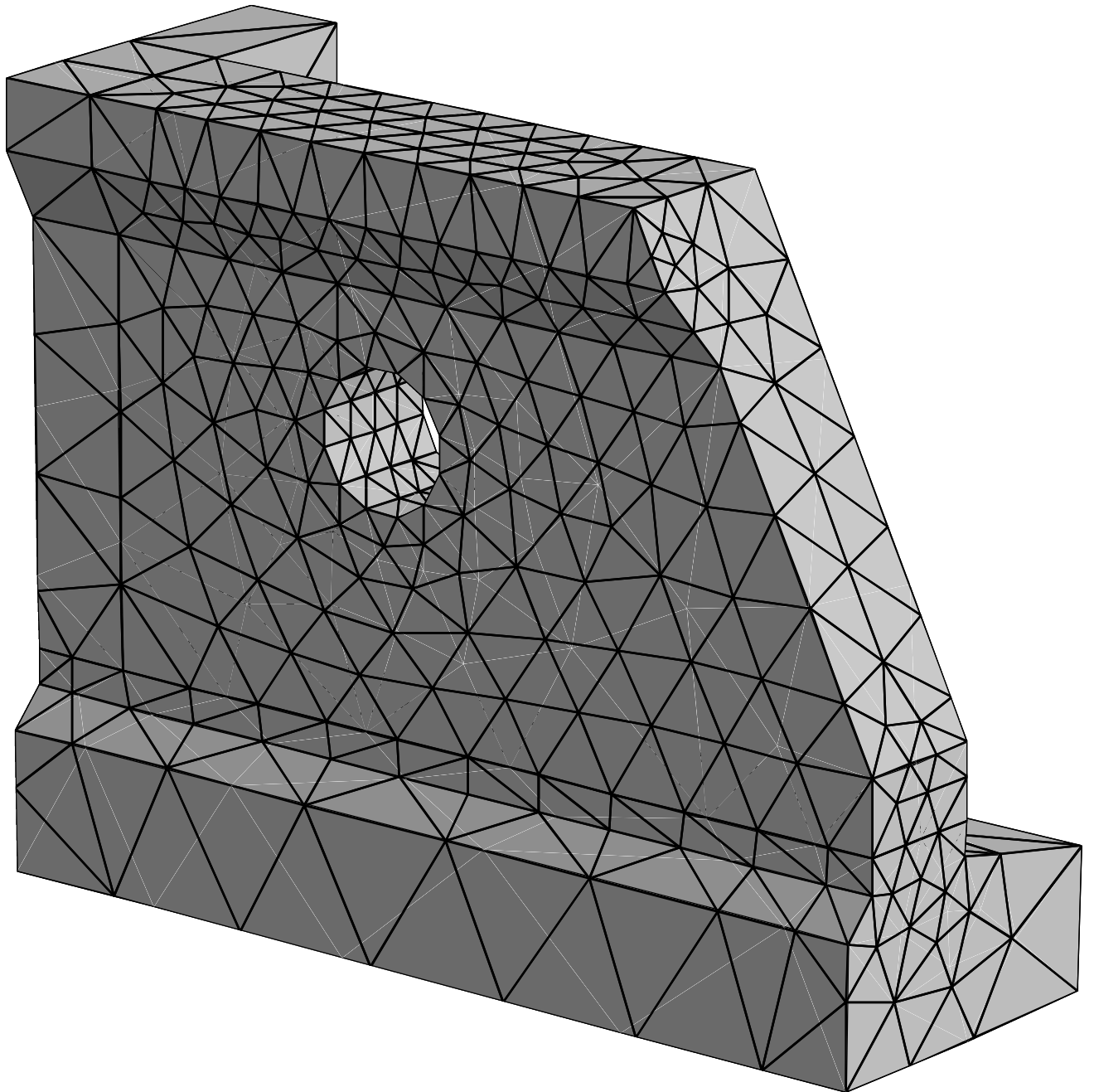
Cooling Pipes/Heating Cables

b4cast ver. 500

User defined Text1

ConTech Analysis ApS
www.b4cast.com
Licensed for evaluation ver.500 License No.:265380996

User defined Text2



FEM - mesh at ,00 hours

b4cast ver. 500	User defined Text1
------------------------	---------------------------

ConTech Analysis ApS www.b4cast.com Licensed for evaluation ver.500 License No.:265380996	User defined Text2
---	---------------------------

Volumes

Name	Cross-Section(s)	Length	Material	Initial Temp.	Time for Placing	Time for Self-Weight
		m		°C	hours	hours
chamfer	chamfer	6.00	hole	-	0.0	-
hole	hole	4.00	hole	-	0.0	-
Foundation	Foundation	7.00	oldx	25.0	0.0	Not applied
End wall	end wall	0.75	oldx	25.0	0.0	Not applied
Wall	wall	7.00	Hetekx	30.0	0.0	Not applied

b4cast ver. 500	User defined Text1
------------------------	---------------------------

ConTech Analysis ApS www.b4cast.com Licensed for evaluation ver.500 License No.:265380996	User defined Text2
---	---------------------------

Position of Volumes

Name	Origo			Normal vector			Direction point		
	x	y	z	x	y	z	x	y	z
	m	m	m	m	m	m	m	m	m
chamfer	2.00	2.00	9.00	0.00	1.00	-0.50	2.00	2.00	0.00
hole	3.00	3.00	3.00	-1.00	0.00	0.00	1.00	0.00	0.00
Foundation	0.00	0.00	0.00	0.00	0.00	1.00	1.00	0.00	0.00
End wall	0.00	0.00	0.00	0.00	0.00	1.00	1.00	0.00	0.00
Wall	0.00	0.00	0.00	0.00	0.00	1.00	1.00	0.00	0.00

b4cast ver. 500	User defined Text1
ConTech Analysis ApS www.b4cast.com Licensed for evaluation ver.500 License No.:265380996	User defined Text2

Cross Section

Foundation	r-coordinate	s-coordinate
	m	m
	0.500	-0.500
	3.000	-0.500
	3.000	0.500
	1.750	0.750
	1.750	1.000
	0.750	1.000
	0.750	0.750
	0.500	0.500
	chamfer	r-coordinate
	m	m
	0.000	0.000
	2.000	0.000
	2.000	4.000
	0.000	4.000
end wall	r-coordinate	s-coordinate
	m	m
	0.750	1.000
	1.750	1.000
	1.750	0.750
	3.000	0.500
	3.000	5.000
	0.500	5.000
	0.500	4.500
	0.750	4.000

b4cast ver. 500

User defined Text1

ConTech Analysis ApS
www.b4cast.com
Licensed for evaluation ver.500 License No.:265380996

User defined Text2

Cross Section

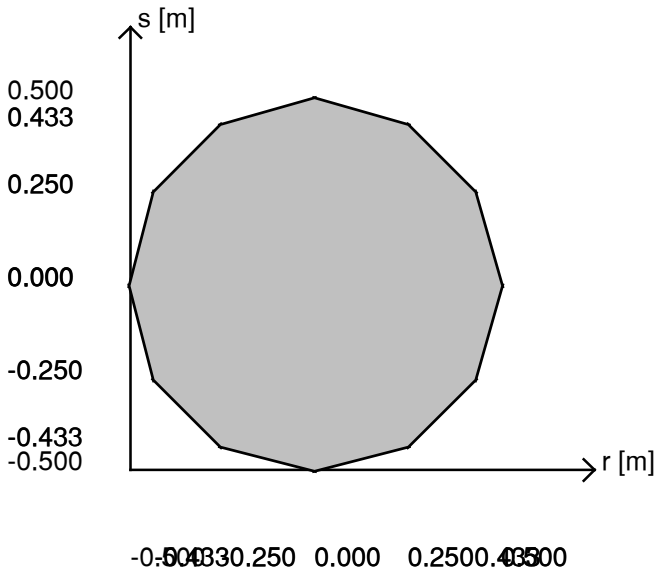
hole

r-coordinate

s-coordinate

m

m



0.500

0.000

0.433

0.250

0.250

0.433

0.000

0.500

-0.250

0.433

-0.433

0.250

-0.500

0.000

-0.433

-0.250

-0.250

-0.433

0.000

-0.500

0.250

-0.433

0.433

-0.250

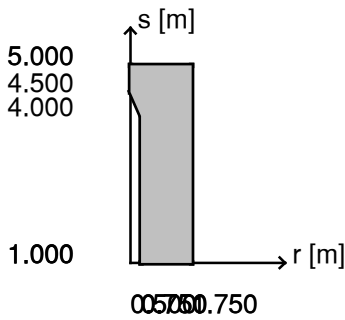
wall

r-coordinate

s-coordinate

m

m



0.750

1.000

1.750

1.000

1.750

5.000

0.500

5.000

0.500

4.500

0.750

4.000

b4cast ver. 500	User defined Text1
ConTech Analysis ApS www.b4cast.com Licensed for evaluation ver.500 License No.:265380996	User defined Text2

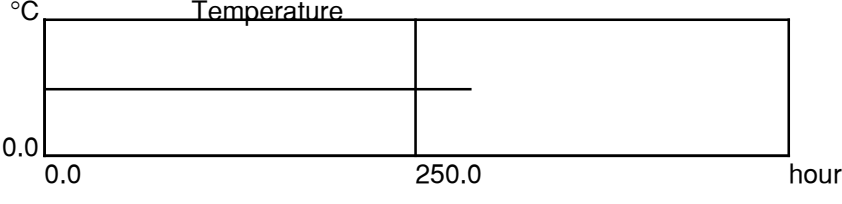
Shields

formwork				
Insulation	Thickness	Thermal Conductivity	On	Off
	m	kJ/m/h/°C	hours	hours
Plywood 21 mm	0.021	0.5	0.0	120.0
Taupaulin	0.008	0.2	120.0	240.0
top				
Insulation	Thickness	Thermal Conductivity	On	Off
	m	kJ/m/h/°C	hours	hours
Taupaulin	0.008	0.2	0.0	240.0

b4cast ver. 500	User defined Text1
------------------------	---------------------------

ConTech Analysis ApS www.b4cast.com Licensed for evaluation ver.500 License No.:265380996	User defined Text2
---	---------------------------

Convection Temperature

ambitemp	Time	Value
	hours	°C
	0.0	25.0

b4cast ver. 500	User defined Text1
ConTech Analysis ApS www.b4cast.com Licensed for evaluation ver.500 License No.:265380996	User defined Text2

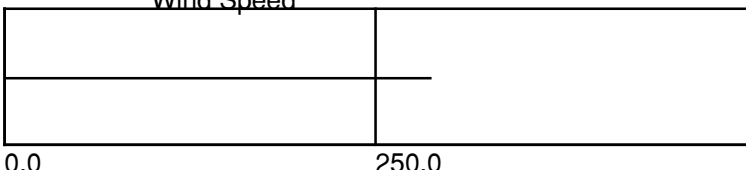
Convection Transmission Coefficient

wind+ no shield	Time	Value
<p>Coeff. of convective transmission</p>	hours	kJ/m²/h/°C
	0.0	90.0
top+wind	Time	Value
<p>Coeff. of convective transmission</p>	hours	kJ/m²/h/°C
	0.0	19.6
	240.0	90.0
formwork+wind	Time	Value
<p>Coeff. of convective transmission</p>	hours	kJ/m²/h/°C
	0.0	18.8
	120.0	19.6
	240.0	90.0

b4cast ver. 500	User defined Text1
------------------------	---------------------------

ConTech Analysis ApS www.b4cast.com Licensed for evaluation ver.500 License No.:265380996	User defined Text2
---	---------------------------

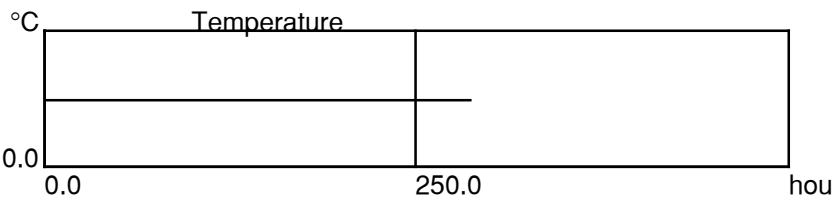
Wind Speed

wind	Time	Value
<div style="display: flex; align-items: center;"> <div style="margin-right: 10px;">m/s</div>  </div>	hours	m/s
	0.0	5.0

b4cast ver. 500	User defined Text1
------------------------	---------------------------

ConTech Analysis ApS www.b4cast.com Licensed for evaluation ver.500 License No.:265380996	User defined Text2
---	---------------------------

Inlet-Temperature

cooltemp	Time	Value
	hours	°C
	0.0	10.0

b4cast ver. 500	User defined Text1
ConTech Analysis ApS www.b4cast.com Licensed for evaluation ver.500 License No.:265380996	User defined Text2

Material:Hetekx

Basic parameters					
Cement Content	281.6	kg/m ³	Density	2328.0	kg/m ³
Heat Capacity	1.000	kJ/kg/°C	Thermal Conductivity	8.0	kJ/m/h/°C
Maturity Type	Arrhenius		Ref. Temperature	20.0	°C
Activation Energy I	33500.0	J/mole	Activation Energy II	1470.0	J/mole

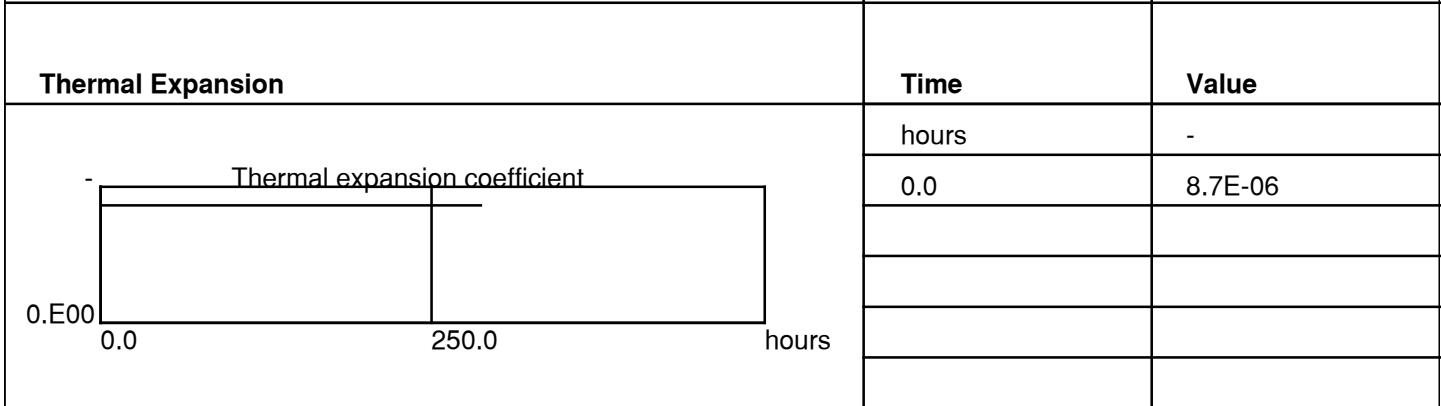
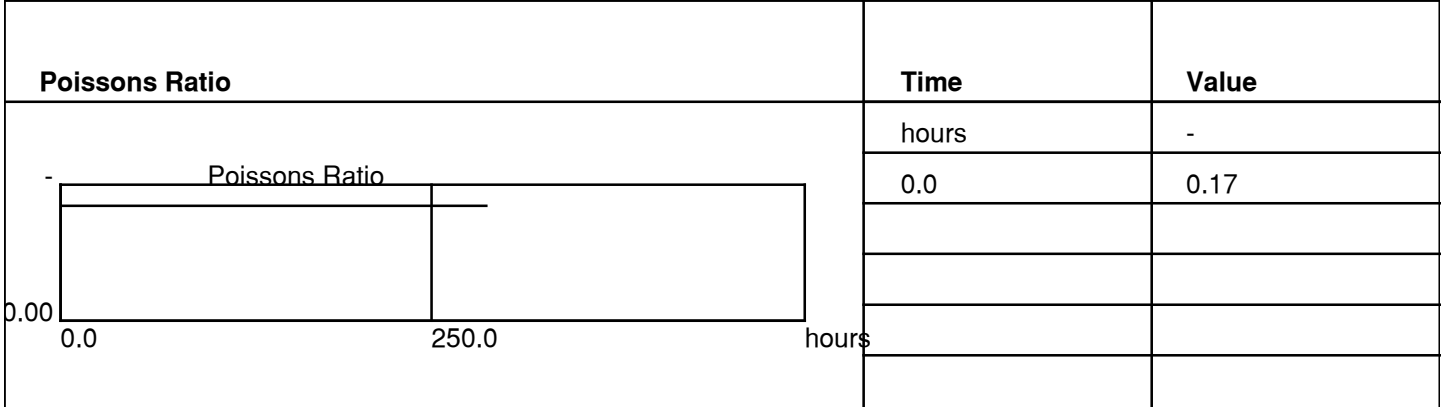
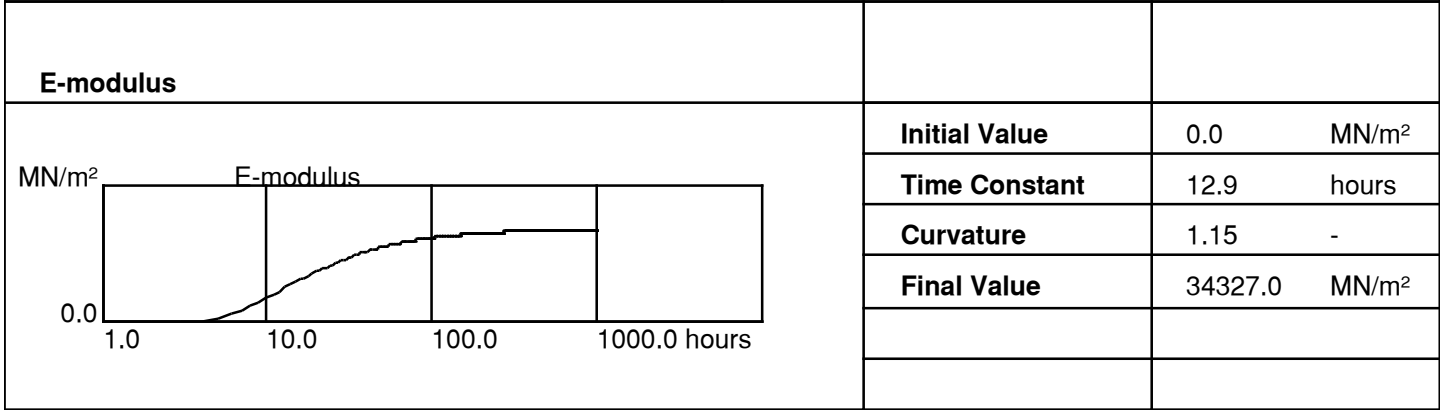
Heat Generation		
	Initial Value	0.0 kJ/kg
	Time Constant	25.0 hours
	Curvature	1.00 -
	Final Value	332.0 kJ/kg

Tensile Strength		
	Initial Value	0.0 MN/m ²
	Time Constant	29.2 hours
	Curvature	0.77 -
	Final Value	3.7 MN/m ²

Compression Strength		
	Initial Value	0.0 MN/m ²
	Time Constant	65.3 hours
	Curvature	0.52 -
	Final Value	60.1 MN/m ²

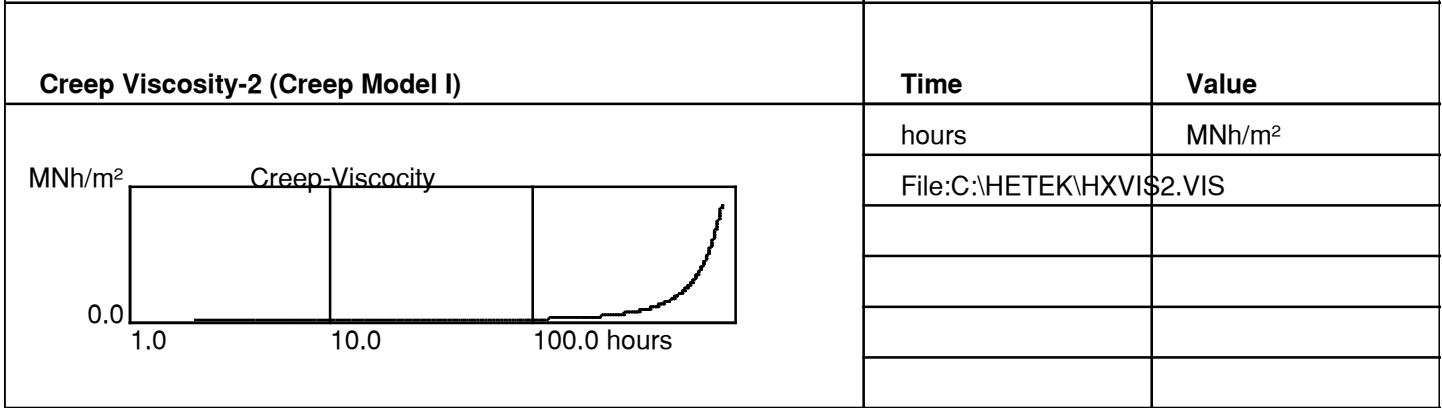
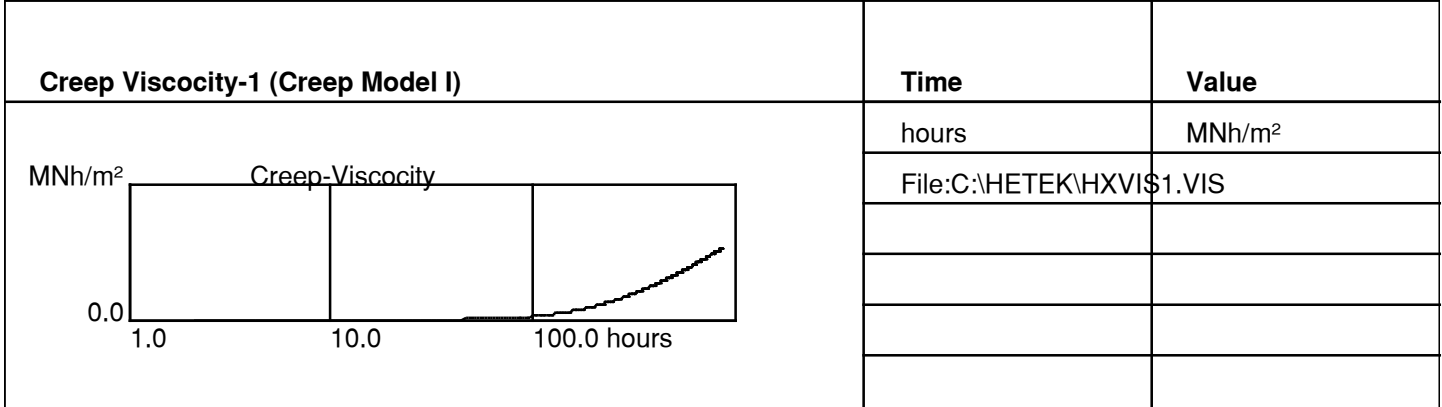
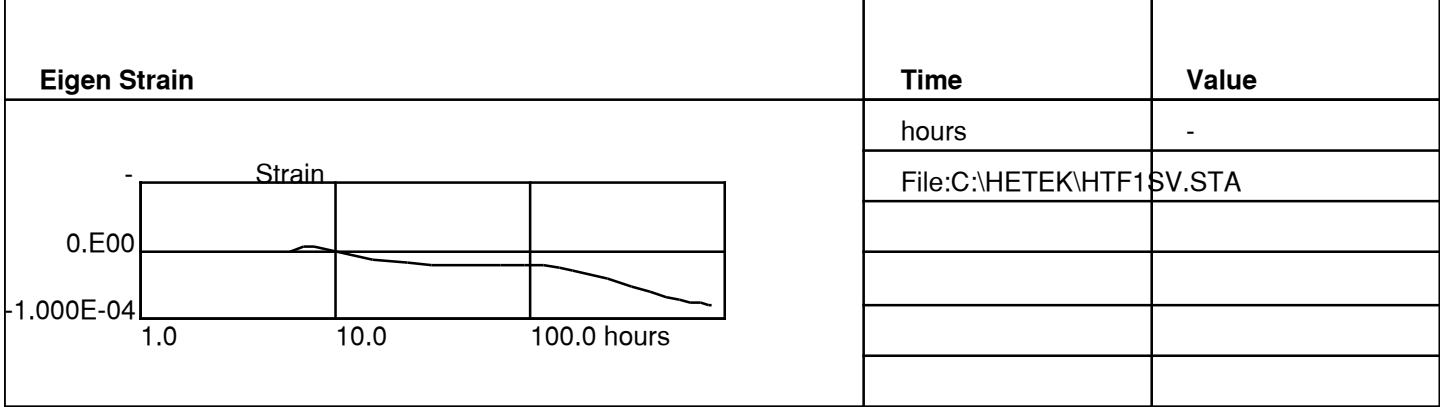
b4cast ver. 500	User defined Text1
------------------------	---------------------------

ConTech Analysis ApS www.b4cast.com Licensed for evaluation ver.500 License No.:265380996	User defined Text2
---	---------------------------



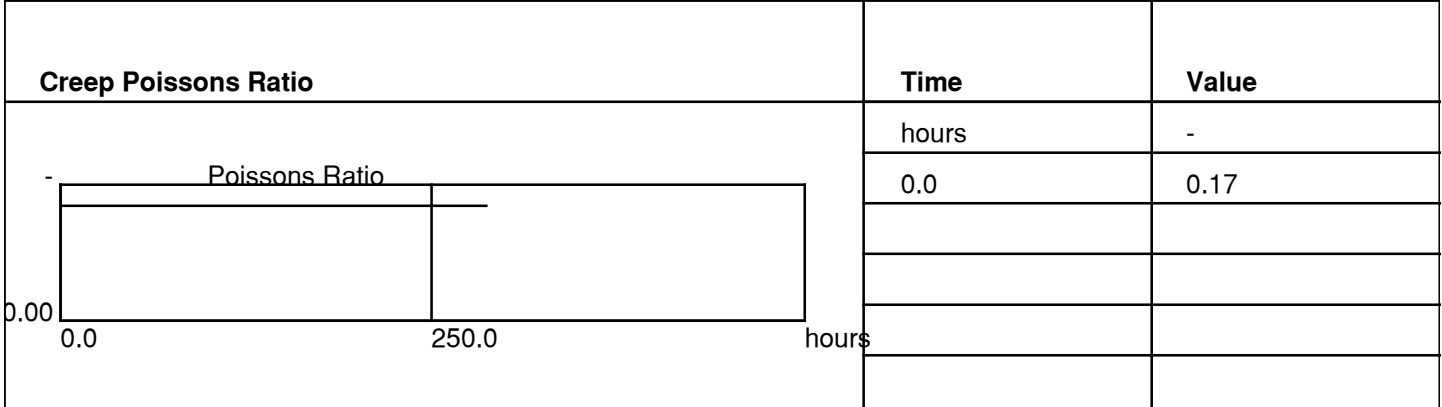
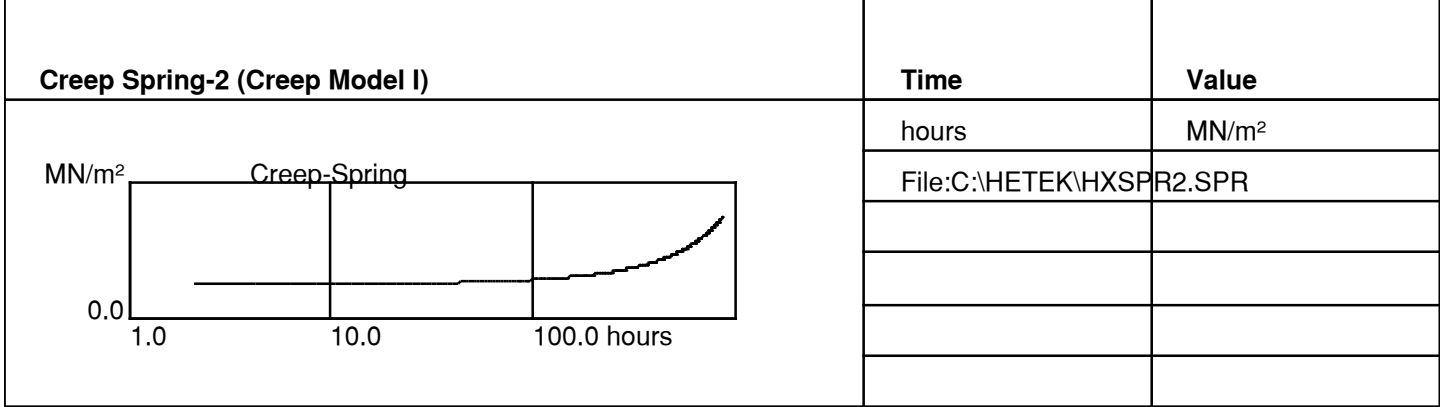
b4cast ver. 500	User defined Text1
------------------------	---------------------------

ConTech Analysis ApS www.b4cast.com Licensed for evaluation ver.500 License No.:265380996	User defined Text2
---	---------------------------



b4cast ver. 500	User defined Text1
------------------------	---------------------------

ConTech Analysis ApS www.b4cast.com Licensed for evaluation ver.500 License No.:265380996	User defined Text2
---	---------------------------



b4cast ver. 500	User defined Text1		
ConTech Analysis ApS www.b4cast.com Licensed for evaluation ver.500 License No.:265380996	User defined Text2		
<p>It is possible to write a text-description of the material.</p>			
<i>Job: web2-cooled-str</i>	<i>View: mesh</i>	<i>Calc.: 09-05-2012 13:41</i>	<i>Printed: 10-11-2015 20:35</i>

b4cast ver. 500	User defined Text1
ConTech Analysis ApS www.b4cast.com Licensed for evaluation ver.500 License No.:265380996	User defined Text2

Material:oldx

Basic parameters				
Cement Content	0.0	kg/m ³	Density	2222.0 kg/m ³
Heat Capacity	1.000	kJ/kg/°C	Thermal Conductivity	6.0 kJ/m/h/°C
Maturity Type	Arrhenius		Ref. Temperature	20.0 °C
Activation Energy I	33500.0	J/mole	Activation Energy II	1470.0 J/mole

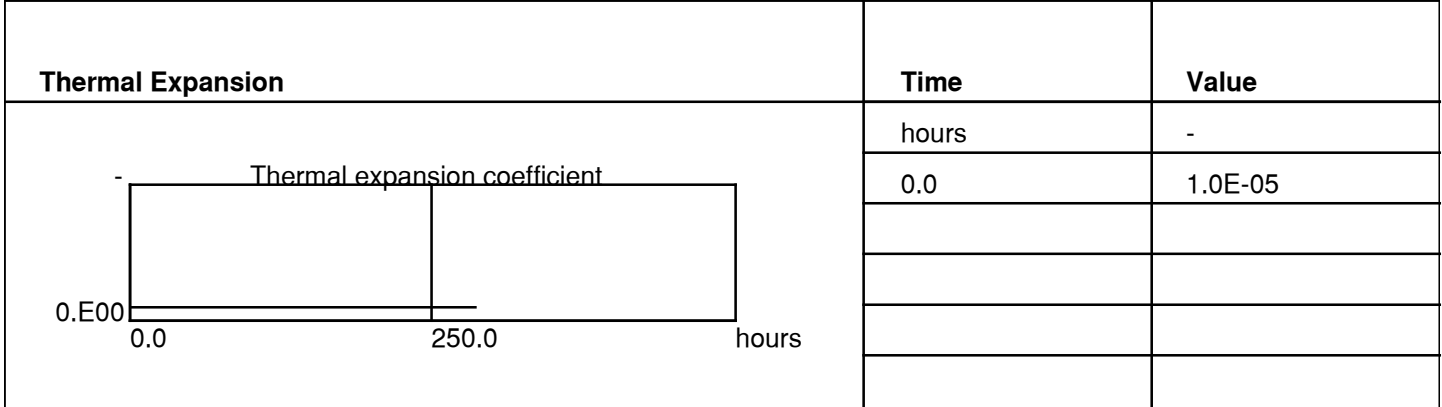
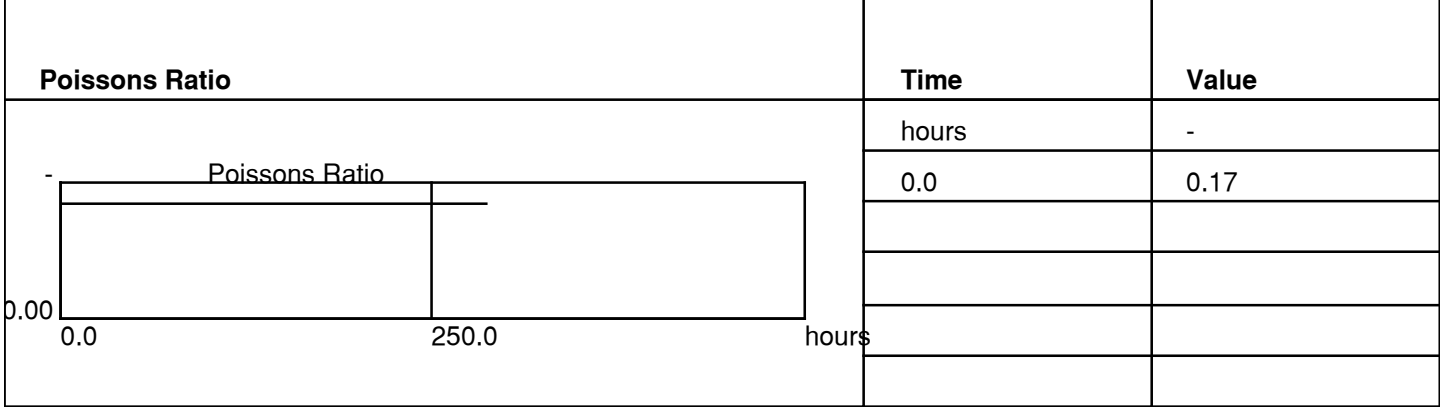
Tensile Strength 	Time	Value
	hours	MN/m ²
	0.0	3.0

Compression Strength 	Time	Value
	hours	MN/m ²
	0.0	35.0

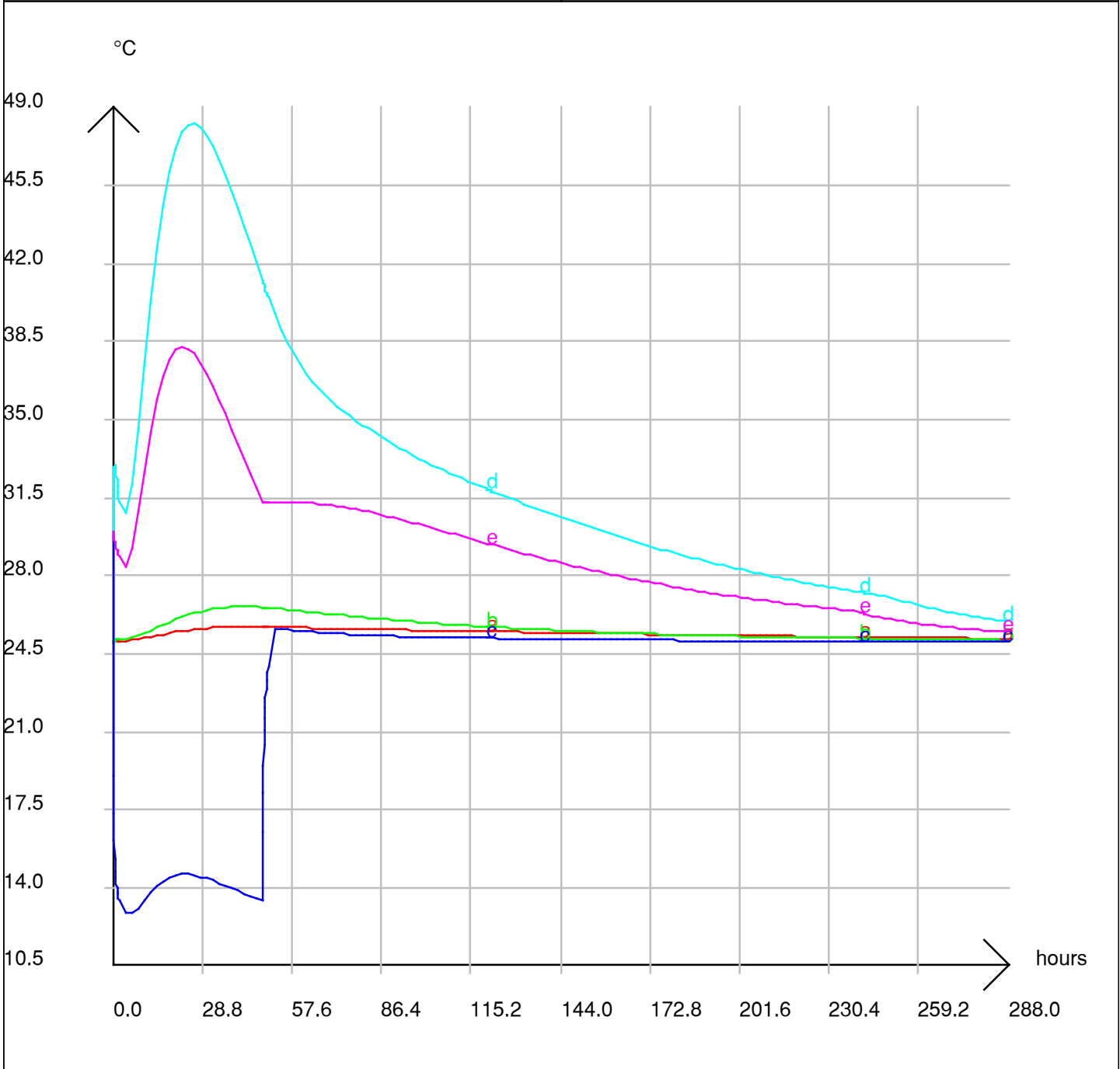
E-modulus 	Time	Value
	hours	MN/m ²
	0.0	30000.0

b4cast ver. 500	User defined Text1
------------------------	---------------------------

ConTech Analysis ApS www.b4cast.com Licensed for evaluation ver.500 License No.:265380996	User defined Text2
---	---------------------------



b4cast ver. 500	User defined Text1
ConTech Analysis ApS www.b4cast.com Licensed for evaluation ver.500 License No.:265380996	User defined Text2



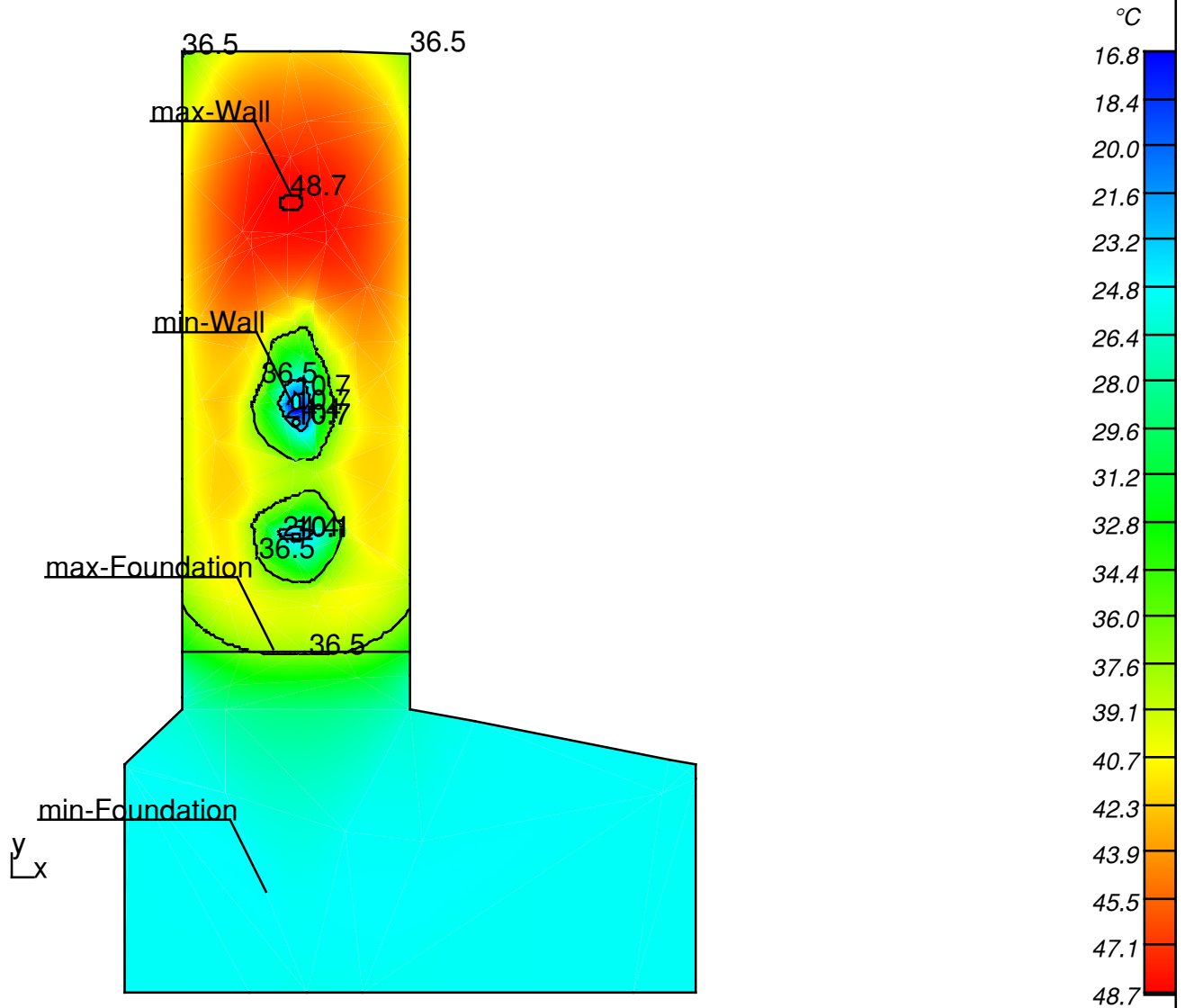
Development of Temperature		
Curve	Diagram Type	Location
a —	Average	Volume:Foundation
b —	Average	Volume:End wall
c —	Minimum	Volume:Wall
d —	Maximum	Volume:Wall
e —	Average	Volume:Wall
Job: web2-cooled-str	View: diatemp	Calc.: 09-05-2012 13:41
		Printed: 10-11-2015 20:35

b4cast ver. 500

User defined Text1

ConTech Analysis ApS
 www.b4cast.com
 Licensed for evaluation ver.500 License No.:265380996

User defined Text2

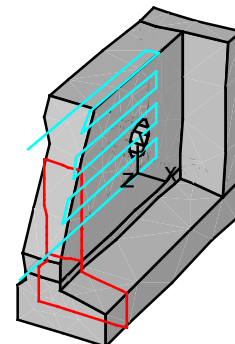


Time at max. temp.

Temperature at 26.0 hours

Section z = 5.95 m

Volume	Minimum	Maximum	Average
	°C	°C	°C
Foundation	24.8	37.2	25.7
Wall	16.8	48.7	41.2



Job: web2-cooled-str

View: tempmaxcross

Calc.: 09-05-2012 13:41

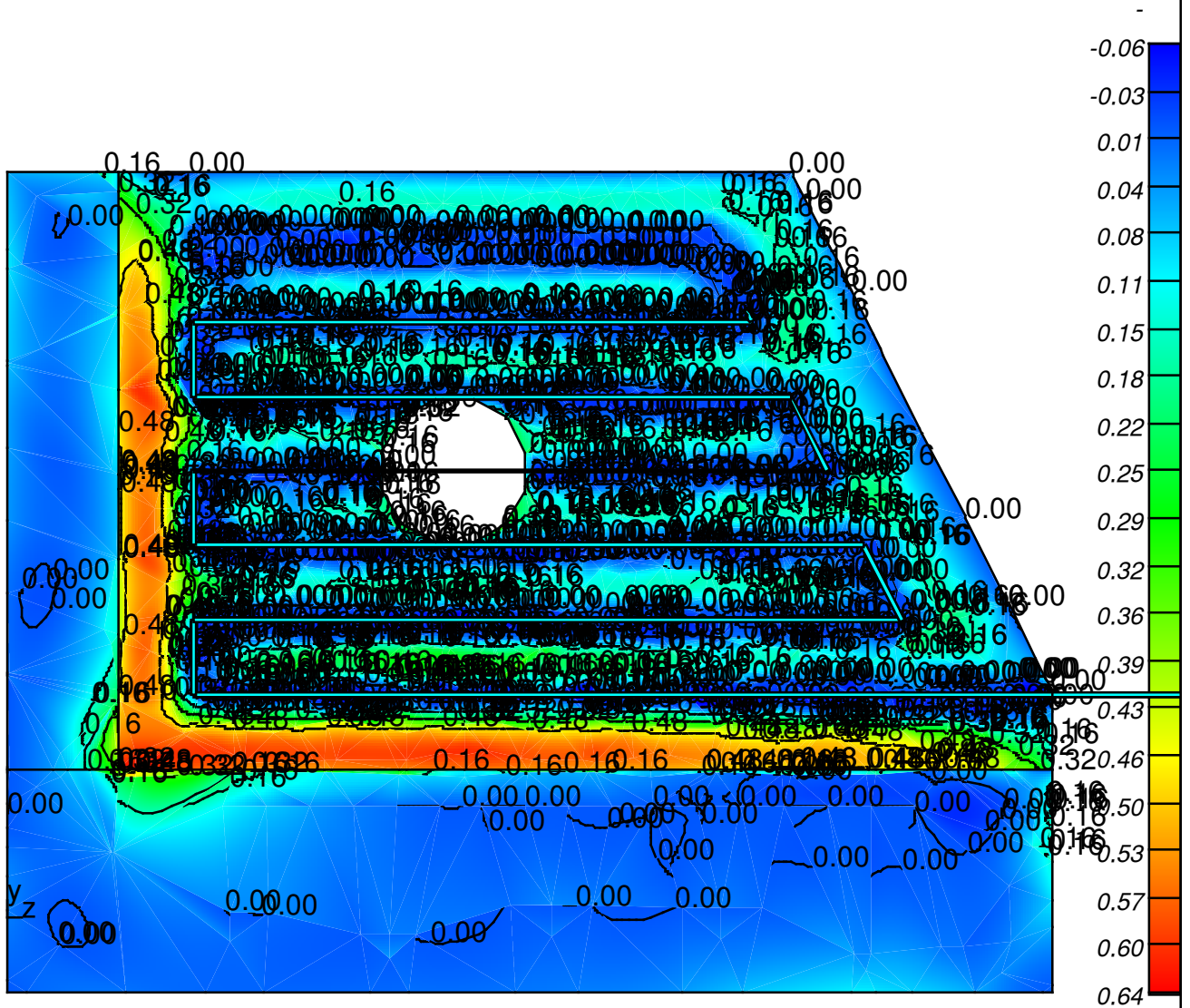
Printed: 10-11-2015 20:35

b4cast ver. 500

User defined Text1

ConTech Analysis ApS
www.b4cast.com
Licensed for evaluation ver.500 License No.:265380996

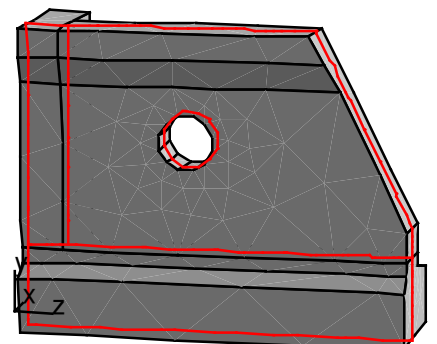
User defined Text2



Exploitation of Tensile Strength at 288.0 hours

Section x = 1.25 m

Volume	Minimum	Maximum	Average
	-	-	-
Foundation	-0.02	0.53	0.03
End wall	0.00	0.47	0.05
Wall	-0.06	0.64	0.13

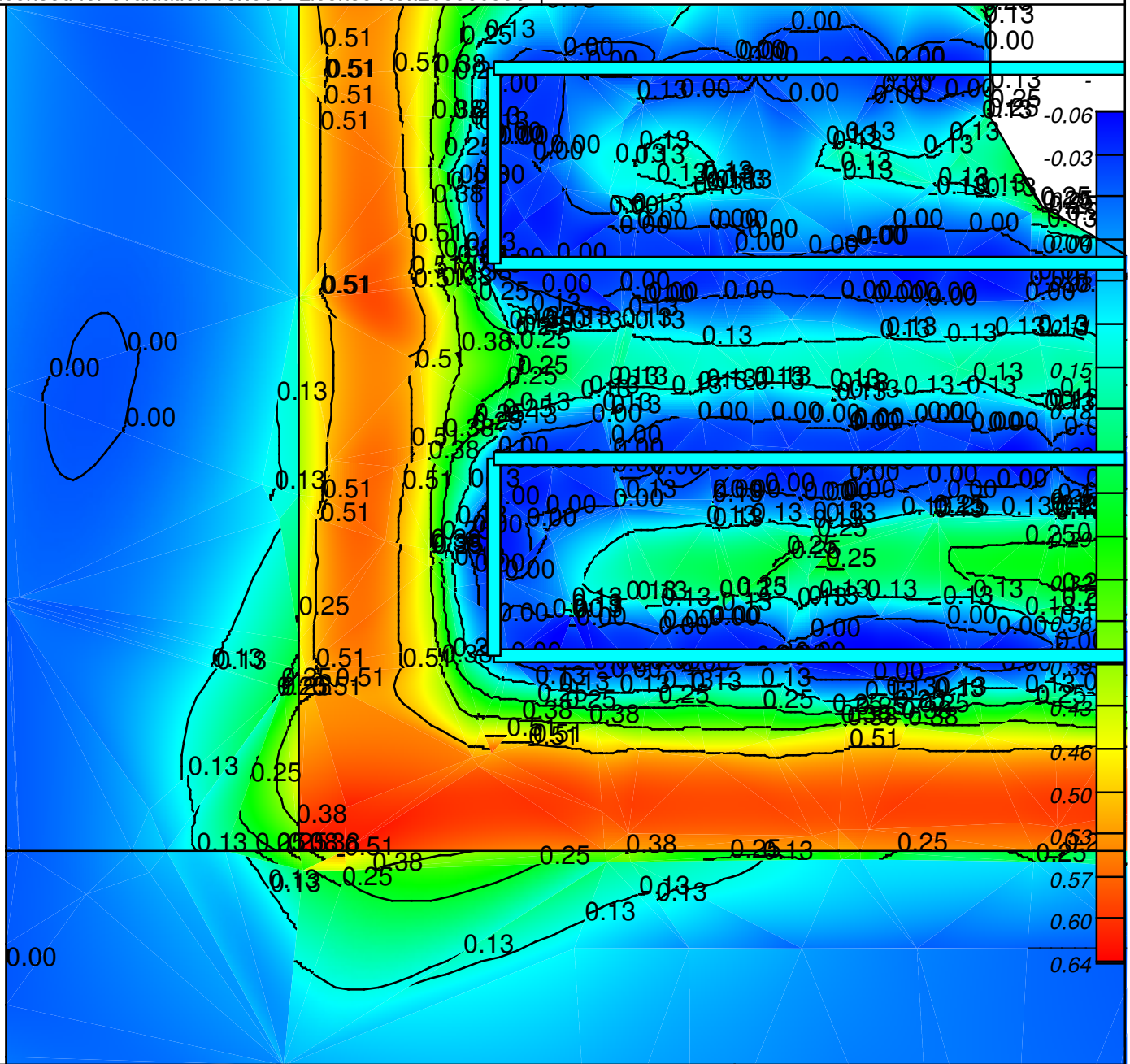


b4cast ver. 500

User defined Text1

ConTech Analysis ApS
 www.b4cast.com
 Licensed for evaluation ver.500 License No.:265380996

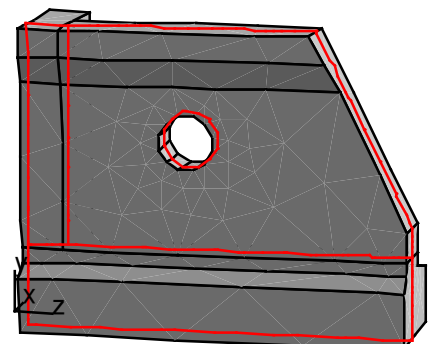
User defined Text2



Exploitation of Tensile Strength at 288.0 hours

Section x = 1.25 m

Volume	Minimum	Maximum	Average
	-	-	-
Foundation	-0.02	0.53	0.03
End wall	0.00	0.47	0.05
Wall	-0.06	0.64	0.13



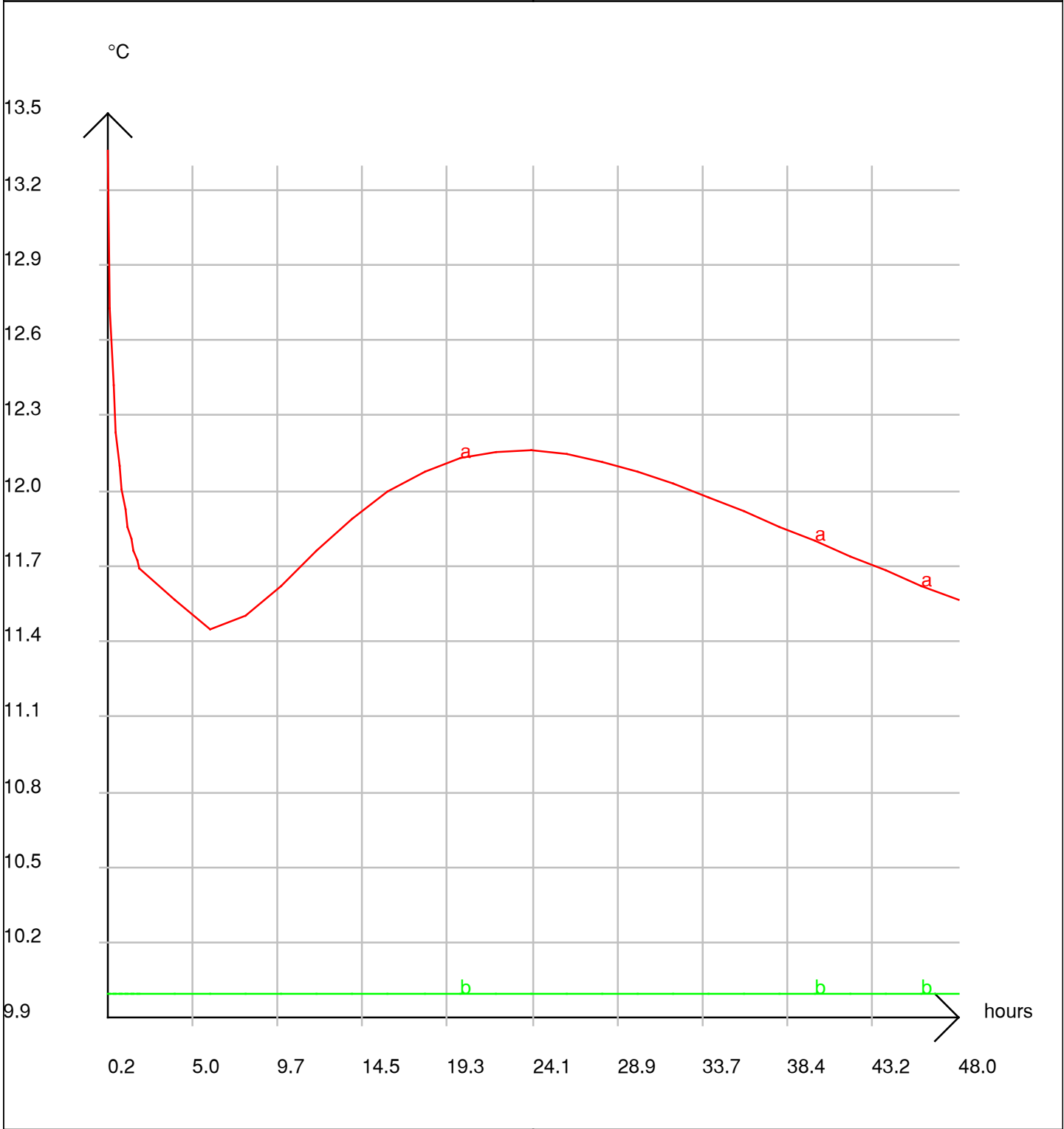
Job: web2-cooled-str

View: exploi1

Calc.: 09-05-2012 13:41

Printed: 10-11-2015 20:35

b4cast ver. 500	User defined Text1
ConTech Analysis ApS www.b4cast.com Licensed for evaluation ver.500 License No.:265380996	User defined Text2



Development of Temperature		Inlet/Outlet of cooling water	
Curve	Diagram Type	Location	
a _____	Point	(0.92,4.50,5.65)(m,m,m)	
b _____	Point	(1.25,1.51,7.00)(m,m,m)	
Job: web2-cooled-str	View: coolwater-out	Calc.: 09-05-2012 13:41	Printed: 10-11-2015 20:35